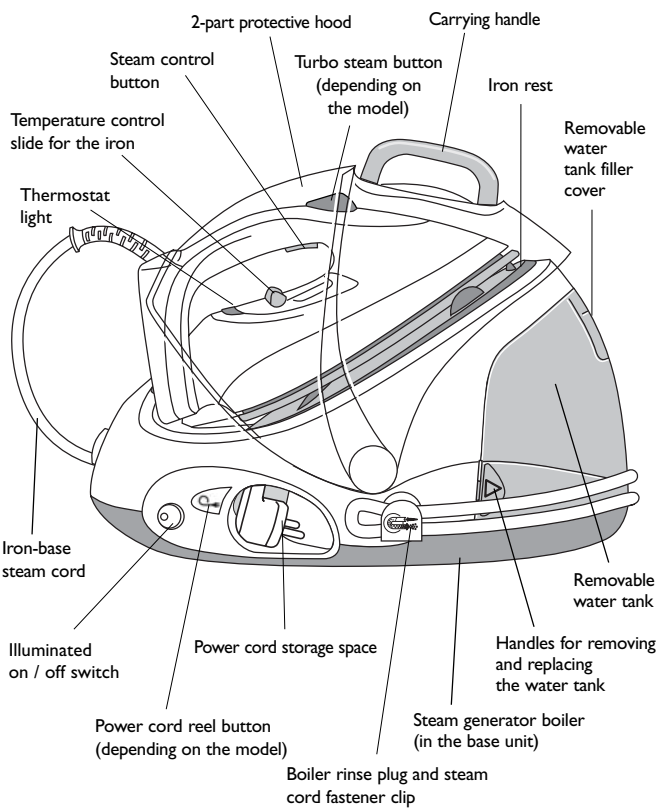


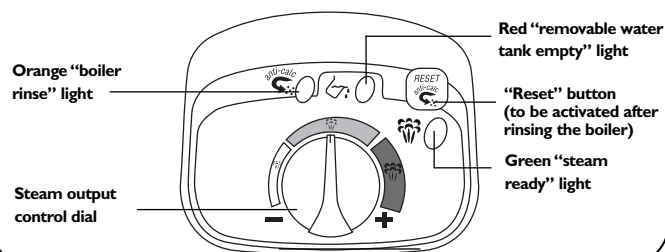
PROTECT & PROTECT TURBO

016685 - 03/05

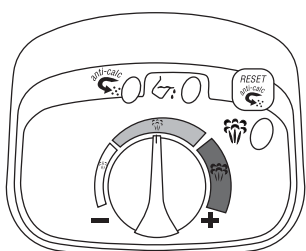
1- UNDERSTANDING YOUR STEAM GENERATOR



CONTROL PANEL



5- OPERATING THE CONTROL PANEL



"Reset" button:
• to be held pressed for 2 or 3 seconds after rinsing the boiler (see paragraph 11).

- Flashing green light : the water is heating up in the boiler.
- Continuous green light : steam is ready for use.

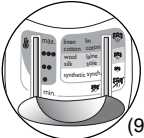
- Continuous red light : the water tank is empty.

- Orange "boiler rinse" light flashes : your boiler needs rinsing.

Note: the appliance must be cold (see section 11).

6- USING YOUR STEAM GENERATOR

- Place the iron's temperature control slide according to the type of fabric to be ironed (9).
- The thermostat light comes on. **Be careful ! The steam generator is ready when the thermostat light goes out and when the green "steam ready" light stays on.**
Note: it is normal for the steam cord to become warm during use.
- Adjust the steam output control dial located on the control panel (10).



Set the temperature control slide and steam output control dial according to the type of fabric to be ironed :

Type of fabric	Setting the temperature control slide	Setting the steam output control dial
Linen Cotton ●●●		
Wool Silk, Viscose ●●		
Synthetic, Polyester, Acetate, Acrylic, Polyamide ●		

To obtain steam, press on the steam control button beneath the iron handle and keep it pressed (11). The steam will stop when you release the button.

It is recommended that you start with fabrics to be ironed at a low temperature: synthetics (●). For delicate fabrics (●●), press the steam control button (under the handle of the iron) intermittently to avoid possible water droplets appearing with the steam.



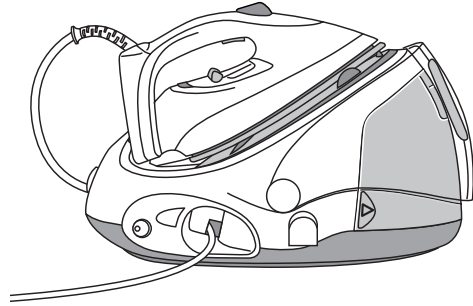
2- "PROTECT CONCEPT"™ SAFETY SYSTEM

Your generator is equipped with the "Protect Concept" system.

- Double protective flaps.
- Flap locking system engages automatically when flaps are closed over the iron, opened by pressing release button.
- Automatic heat shut-off when flaps are closed.
- Carrying handle.

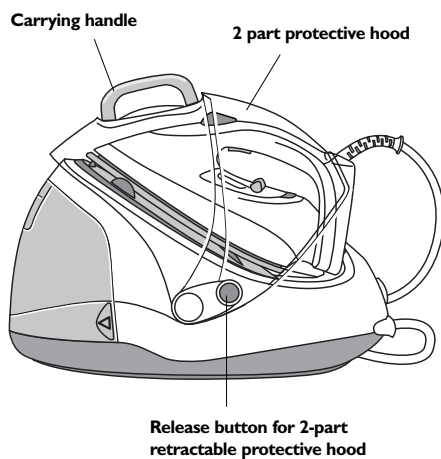
IRONING POSITION

The appliance heats (if connected)



PROTECT CONCEPT

Automatic "Security Auto-stop" function which shuts off the heating of the appliance when the hood is closed over the iron



Your steam generator is equipped with an automatic "Security Auto-stop" function which cuts off the heating of the appliance when the flaps are closed over the iron. The control panel lights go out and the on indicator remains lit, showing that the appliance is connected but not heating.

Recommendations :

- **To prime the steam circuit, either before using the iron for the first time, or if you have not used the steam function for a few minutes, press the steam control button several times in a row, holding the iron away from your clothes.**
This will enable any cold water to be removed from the steam circuit

Iron temperature control slide setting:

- **Start with the fabrics to be ironed at a low temperature (●) and finish with those which need higher temperatures (●●● or Max).**
- **Mixed fibre fabrics: set the ironing temperature to the setting for the most delicate fabric.**
- **Woollen garments: press repeatedly on the steam control button to obtain short bursts of steam, without placing the iron on the garment itself. This will avoid making the fabric shiny.**

Steam output control dial setting:

- **Thick fabric : increase the steam setting.**
- **At a low temperature : set the steam output control dial to the low position.**

To iron without using steam:

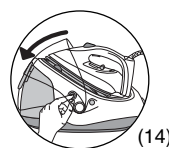
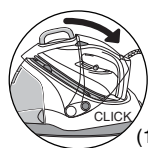
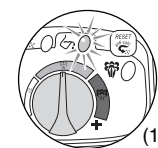
- **Do not press on the steam control button under the iron handle.**

Ironing Board:

For best results, a mesh type ironing board should be used to allow any excess steam to escape.

- **If you are using starch, it should be sprayed onto the reverse side of the fabric to be ironed.**

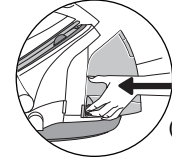
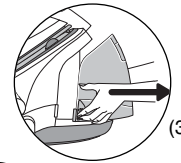
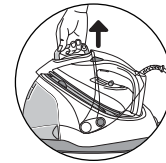
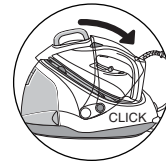
7- WHEN THE RED LIGHT "WATER TANK EMPTY" COMES ON



There is no more steam. The removable water tank is empty (12).

- Raise the 2 parts of the hood over the iron until the protection system locks into place (audible click) (13).
- Grasp the handles of the removable tank and pull horizontally to remove it ; fill with water.
- Replace and push it firmly into place
- Press the release button for the hood and fold it down over the tank (14).

3- PREPARING YOUR STEAM GENERATOR



- To carry your steam generator:
- place the iron on the iron rest of the generator and raise the hood over the iron until it locks into place (audible click) (1).
- grasp the handle of the protective hood to carry your steam generator (2).
- Place your steam generator on a stable, horizontal heat-resistant surface.
- Grasp the handles of the removable tank and pull horizontally to remove it (3).
- Fill up the water tank taking care not to exceed the maximum level just below the filler cover (4).
- Replace it **firmly** in its housing, making sure it is fully into place (5).

The water to use in your steam generator :

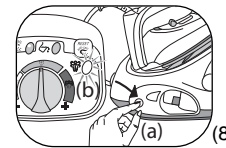
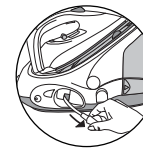
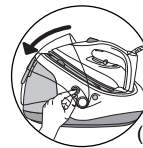
Your steam generator has been designed to operate using untreated tap water. However, if your water is very hard, mix it 50% untreated tap water with 50% distilled water.

Types of water to be avoided :

Do not add anything to the contents of the removable water tank, and do not use water from clothes dryers, scented water, water from refrigerators, water from air conditioners or rain water. Also do not use filtered, boiled or bottled mineral water. These contain organic waste or mineral elements that become concentrated when heated and cause spitting, brown staining or premature wear to your iron.

4- USING YOUR STEAM GENERATOR

- Press the release button for the 2-part protective hood and fold it down over the tank to release the iron (6).
- Completely unwind** the power cord from its storage space before connecting to an earthed socket (7).
- Press on the on / off switch (located on the side of the base unit) (a): the green light (located on the control panel) flashes and the boiler heats up (b). It will take around 2 minutes for steam to be produced which is indicated when the green "steam ready" light stops flashing (8).



- **The first time the appliance is used, there may be some fumes and smell but this is not harmful. They will not affect use and will disappear rapidly.**
- **When starting, and regularly while it is being used, your steam generator's electric pump injects water into the boiler. It makes a noise but this is quite normal. You may also hear a clicking noise which is the steam valve opening. Again this is normal. If you are pressing on the steam control button at this time you may lose a little steam pressure momentarily.**

8- VERTICAL STEAM IRONING

- Set the iron temperature control slide and the steam output control dial (located on the control panel) to the MAX position.
- Hang the garment on a coat hanger and hold the fabric slightly taut with one hand.

As steam is very hot, never attempt to remove creases from a garment while it is being worn, always hang garment on a coat hanger.

3. Holding the iron in a vertical position, tilted slightly forwards, press repeatedly on the steam control button (under the iron handle) moving the iron from top to bottom (15).



Recommendations :

For fabrics other than linen or cotton, hold the iron a few centimetres from the garment to avoid burning the fabric.

9- TURBO STEAM FUNCTION (depending on the model)

Press 2 or 3 times on the turbo steam button to obtain a more powerful burst of steam (16):

- for ironing thicker fabrics,
- to eliminate creases,
- for powerful vertical steaming.



Be careful :

Use the turbo steam function very carefully because of the exceptional power of steam that may cause burns.

NOTE :

Continuous use of the turbo steam function will begin to cool the iron and may cause water to drip from the iron. If this occurs, stop using the turbo steam function and allow the iron thermostat to reach temperature again (thermostat light will come on and go off) before using this function again.

10- MAINTAINING YOUR STEAM GENERATOR

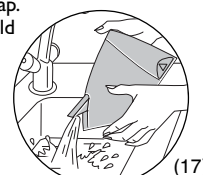
- **Before cleaning, ensure that your steam generator is unplugged and that the soleplate and the iron rest have cooled down.**

- Do not use detergent or descaling products for cleaning the soleplate or the base-unit.

- Never hold the iron or the base unit under the tap.
- Do not place the iron on a metal rest as this could damage it.

Place it on the iron-rest on the base unit : it has non-slip pads and has been designed to withstand high temperatures.

- Empty and rinse the removable water tank (17).
- Regularly clean the soleplate with a damp, non-metallic washing up pad.
- Clean the plastic parts of the appliance occasionally with a soft cloth.



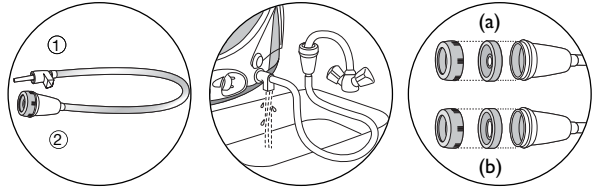
11. THE ORANGE "BOILER RINSE" LIGHT FLASHES

Note:

- To extend the efficient operating life of your boiler and avoid scale particles on your linen, your generator is equipped with an orange "boiler rinse" warning light that flashes on the control panel after about 10 uses.
- If your water is hard, increase the frequency.
- Do not use descaling agents for rinsing out the boiler, as they could damage it.

I. TO RINSE THE BOILER USING RINSING ACCESSORY

For greater effectiveness and for ease of operation, you are advised to use the rinsing accessory provided in the box. It will make it easier to rinse the boiler as the generator will need less handling.

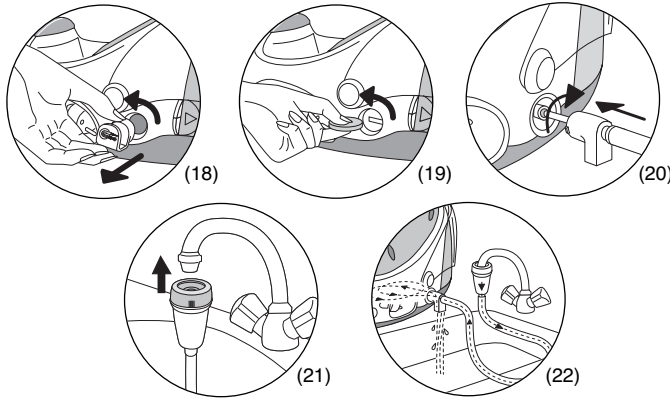


Your rinsing accessory has been designed to work on a wide range of taps. It is supplied with 2 types of membrane (a) (b). Choose the one best suited to your tap.

If you do not wish to, or cannot use the rinsing accessory, refer to the advice in paragraph II (next page).

Before attempting to rinse the boiler of your generator, it is essential to leave it to cool for at least 2 hours in order to avoid any risk of scalding. If the orange "boiler rinse" light flashes, you can continue ironing normally but remember to rinse the boiler first, the next time that you use it.

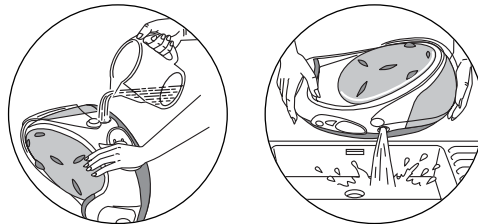
1. Check that the generator is cold and unplugged.
2. The protective hood must be folded down over the tank.
3. Place your steam generator on the edge of your sink, with the iron to one side, standing on its heel.
4. Unscrew the cord clip by turning a quarter turn to the left (18).
5. Using a coin, gently unscrew the boiler rinse plug (19).
6. Place the plastic nozzle (1) of the rinsing pipe into the hole of the boiler and turn gently to the right until it locks. The outlet of this nozzle must be positioned over the sink (20).
7. Connect the rubber end (2) of the rinsing pipe to a cold tap (21).
8. Turn the tap on gently and gradually and let cold water run through the rinsing pipe into the sink for about 1 minute (22).
9. Switch off the tap and remove the rinsing pipe.
10. Screw back and tighten up the boiler rinse plug with a coin.
11. Put the cord clip back in place.
12. The next time you use the generator, hold down the "reset" button for 2 to 3 seconds to turn off the orange light.



II. TO RINSE THE BOILER WITHOUT THE RINSING ACCESSORY

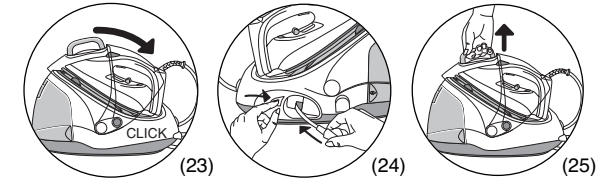
Before attempting to rinse the boiler of your generator, it is essential to leave it to cool for at least 2 hours in order to avoid any risk of scalding. If the orange "boiler rinse" light flashes, you can continue ironing normally but remember to rinse the boiler first, the next time that you use it.

1. Check that the generator is cold and unplugged.
2. The protective hood must be folded down over the tank.
3. Place your steam generator on the edge of your sink, with the iron to one side, standing on its heel.
4. Unscrew the cord clip by turning a quarter turn to the left.
5. Using a coin, gently unscrew the boiler rinse plug.
6. Holding your steam generator in a tilted position, and using a jug, fill the boiler (in the base unit) with 1/4 litre of tap water.
7. Shake the base unit for a few moments and then empty it completely over your sink.
- To obtain the best result, we recommend that this operation is done twice.
8. Screw back and tighten up the boiler rinse plug with a coin.
9. Put the cord clip back in place.
10. The next time you use the generator, hold down the "reset" button for 2 to 3 seconds to turn off the orange light.



12- PUTTING YOUR STEAM GENERATOR AWAY

1. Place the iron on the rest.
 2. Turn off at the main O/I switch and unplug.
 3. Raise the 2 parts of the hood over the iron until the protection system locks into place (audible click) (23).
 4. Retract the electric supply cord (24).
- On the model with an automatic reel, press the reel button and guide the cord with your free hand.
5. Store the steam cord by wrapping it around the casing and securing it in its retaining clip.
 6. You can then put your steam generator away, carrying it by the handle (25).



ENVIRONMENT PROTECTION FIRST !

Your appliance contains valuable materials which can be recovered or recycled.

Take it to a local civic waste collection point.



Never dismantle your iron : always take it to an Approved Service Centre

HELPLINE

If you have any product problems or queries with your product, please telephone our Customer Relations team on :
0845 6021454 (UK) (Calls charged at local rate)
(01) 4751947 (Ireland)
 Consult our web site: www.tefal.co.uk


13- SAFETY RECOMMENDATIONS

- Your steam generator is an electrical appliance. It should be used under normal conditions. It is intended for domestic use only.
- Your generator is fitted with 2 safety systems :
 - A pressure release valve which, in the event of a malfunction, releases any excess steam.
 - A thermal fuse to prevent the appliance from overheating.
- **This appliance is not intended to be used by children or without supervision by persons whose physical, sensory or mental aptitude to use it in complete safety is impaired. Children must be supervised to ensure that they do not play with the appliance.**
- **The appliance must be used and placed on a stable, heat-resistant surface.**
- **Completely** unwind the power cord from its storage space before connecting to an earthed socket.
- Always plug your steam generator into:
 - An electrical installation with voltage between 220V and 240V. Connecting to the wrong voltage may cause irreparable damage to the appliance and will invalidate your guarantee.
 - An earthed socket. If you are using a mains extension lead, ensure that it is correctly rated (10A) with an earth, and is fully extended.
- Should the power cord or the boiler cord linking the iron to the base unit become damaged, it must be replaced by a TEFAL approved service centre to avoid the risk of danger or injury.

Be careful:

- **The soleplate and generator iron-rest can become very hot and cause burns : never touch these parts.**
 - If you store your iron in a cupboard or confined space, ensure that it is left to cool before putting it away.
 - **Your appliance gives off steam which can cause burns.**
 - Handle your iron carefully, particularly when using the vertical steam function
 - **Never direct the steam towards persons or animals.**
 - **Never touch the electric cords with the soleplate of the iron.**
 - Never leave the appliance unattended :
 - when it is connected to the mains,
 - until it has cooled down (around 1 hour).
 - **Do not unplug the appliance by pulling on the cord.**
 - Always unplug your appliance :
 - before rinsing out the boiler,
 - before cleaning your generator,
 - after each use.
 - Before unscrewing the boiler rinse plug, wait until the generator is cold (unplugged for more than 2 hours).
 - Never fill the boiler through the rinse hole (except for rinsing)
 - Never immerse your steam generator in water or any other liquid. Never hold it under the water tap
 - While rinsing out the boiler, never fill it directly under the tap.
 - The appliance must not be used if it has fallen to the floor, shows evidence of damage, leaks or fails to function correctly.
 - Never dismantle your appliance. To avoid any danger, have it inspected in a TEFAL approved service centre.
 - If you lose or damage the boiler rinse plug, have it replaced by a TEFAL Approved Service Centre.
- This appliance is designed for domestic use only. In the case of professional use, inappropriate use or failure to comply with the instructions, TEFAL accepts no responsibility and the guarantee does not apply.

14- IS THERE A PROBLEM ?

Problems	Possible causes	Solutions
• The thermostat light and the on/off switch are not illuminated.	• The appliance is not switched on.	• Check that your appliance is correctly plugged in and press the illuminated on/off switch (located on the side of the base-unit).
• The control panel lights remain off.	• The protective hood is raised over the iron. The "Auto-stop" automatic shut-off is activated.	• Press the release button for the 2-part protective hood and fold it down over the tank.
• Water runs through the holes in the soleplate.	• You are using the steam control button before the iron is hot enough. • Water has condensed in the pipes because you are using steam for the first time or you have not used it for some time. • Over use of the turbo steam function (which has cooled down the iron).	• Decrease the steam output while ironing at low temperature (steam output control dial on the control panel). • Wait for the thermostat light to go out before activating the steam control button. • Press the steam control button away from your ironing board until the iron produces steam. • Stop using the turbo steam function and allow the thermostat light to come on and go off again before using this function again.
• White streaks come through the holes in the soleplate.	• Your boiler has a build-up of scale because it has not been rinsed out regularly.	• Rinse out the boiler after every 10 uses, when the orange indicator light flashes (see chapter 11). If your water is hard, increase the frequency.
• You have already rinsed the boiler and the orange "boiler rinse" light is flashing.	• You have not pressed for long enough on the "Reset" button.	• Hold the "Reset" button down for 2 to 3 seconds to turn off the indicator light.
• Brown streaks come through the holes in the soleplate and stain the linen.	• You are using chemical descaling agents or additives in the water for ironing. • Your linen is not rinsed sufficiently or you have ironed a new garment before washing it.	• Never add this type of product in the removable water tank or in the boiler (see our recommendations regarding water to be used). • Ensure linen is rinsed thoroughly to remove any soap deposits or chemicals on new garments which have been sucked up by the iron.
• The soleplate is dirty or brown and may stain the linen.	• You are ironing at too high a temperature. • You are using starch.	• See our recommendations regarding temperature control setting. • Always spray starch on the reverse side of the fabric to be ironed.
• There is little or no steam.	• The removable water tank is empty (red "water tank empty" light on). • The steam output control dial is set at minimum.	• Fill the removable water tank • Increase the steam output (control dial on the control panel).
• You have filled the tank but there is no steam.	• The tank is not properly in place.	• Check that the water tank is pushed firmly into place (see section 3).
• Steam escapes from the rinse plug.	• The rinse plug has not been tightened correctly. • The rinse plug seal is damaged.	• Tighten the rinse plug correctly. • Contact an Approved Service Centre to order a new rinse plug seal.
• Steam escapes under the appliance.	• The generator is faulty.	• Stop using the generator and contact an Approved Service Centre.
• The power cord does not fully retract. (depending on the model).	• The power cord has lost tension during retraction.	• Pull the power cord out completely. Press the button  and guide the cord with your free hand.