

## 1. GETTING STARTED - Wash non-stick plates before first use



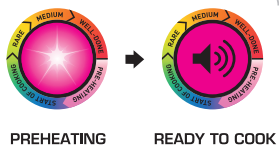
INSERT



PLUG IN

## 2. LIGHT INDICATOR EVOLUTION

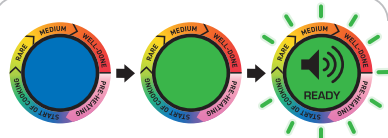
### 1. PREHEATING



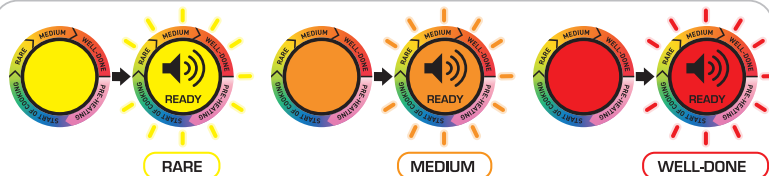
PREHEATING

READY TO COOK

### 2. COOKING STARTS



### 3. COOKING



MANUAL  
FUNCTION



CALL  
CONSUMER  
SERVICE

KEEP WARM



## 3. SELECT COOKING PROGRAM



OPTIONS



Frozen Food  
+ program



Manual mode:  
fixed temperature

## 4. PREHEATING



WAIT

Wait approx 5 min



BEEP = READY

## 5. COOKING



OPEN



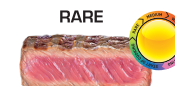
PLACE FOOD



CLOSE  
THICKNESS  
MEASUREMENT



COOKING STARTS



RARE



MEDIUM



WELL-DONE

REMOVE FOOD AT THE REQUIRED LEVEL



READY TO EAT



CLOSE

For 2nd batch of food, close grill and start from section 3

## 6. CLEANING AND MAINTENANCE



OFF



UNPLUG



WAIT



REMOVE



WASH