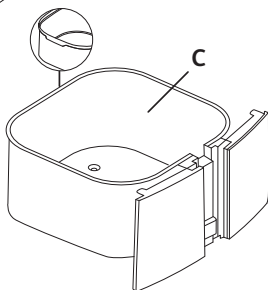
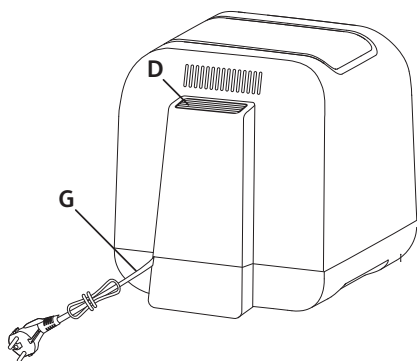
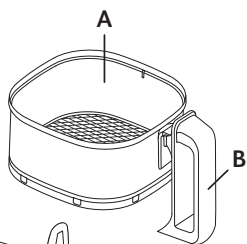
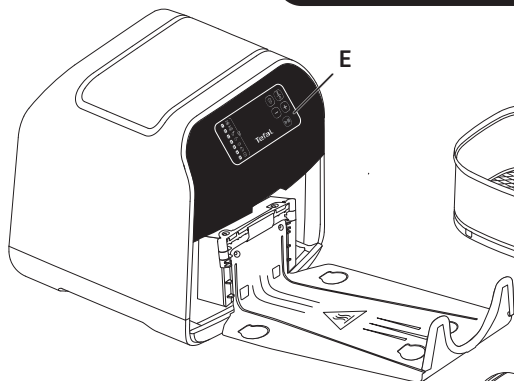
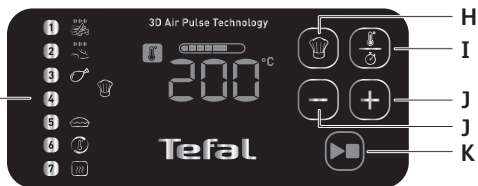


Tefal®

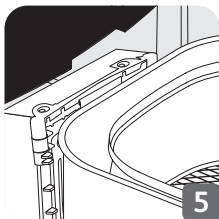
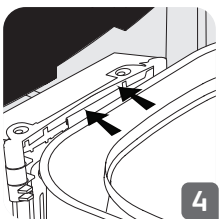
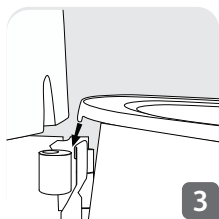
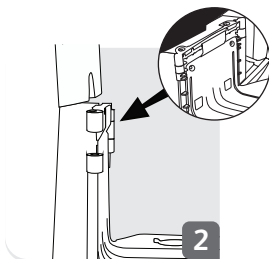
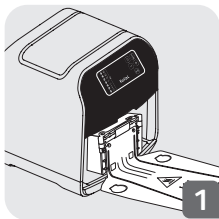
EN



Fry delight XL




FITTING THE PAN IN THE APPLIANCE



Important recommendations

- The appliance can be used up to an altitude of 2000 m.
- This appliance has been designed for internal domestic use only; any professional use which does not conform to the instructions will release the manufacturer from all responsibility and the guarantee will be deemed null and void.
- Read these instructions carefully and keep them in a safe place.
- This appliance is intended for domestic use only.
- This appliance is not intended to function using an external time-switch or a separate remote control system. Connected devices may be controlled via smartphone or tablet, according to the manufacturer's instructions.
- Do not use the appliance if it or the power cord is damaged or if it has fallen and has visible damage or appears to be working abnormally. If this occurs, the appliance must be sent to an Approved Service Centre.
- If the power cord is damaged, it must be replaced by the manufacturer, an approved After-Sales Service or a similarly qualified person, in order to avoid any danger. Never take the appliance apart yourself.
- This appliance is not designed to be used by people (including children) with a physical, sensory or mental impairment, or people without knowledge or experience, unless they are supervised or given prior instructions concerning the use of the appliance by someone responsible for their safety. Children must be supervised to ensure that they do not play with the appliance.
- This appliance can be used by children aged from 8 years and above and persons with reduced physical,

sensory or mental capabilities or lack of experience and knowledge if they have been given supervision or instruction concerning use of the appliance in a safe way and understand the hazards involved. Children shall not play with the appliance. Children under the age of 8 years should not use this appliance unless continuous supervision by a responsible adult is given. Cleaning and user maintenance shall not be made by children unless they are older than 8 years and supervised. Keep the appliance and its cord out of reach of children less than 8 years.

-  Certain parts of the appliance can become hot when the appliance is operating, which could cause burns. Do not touch the hot surfaces of the appliance (the lid, visible metal parts, etc).
- All these removable parts may be cleaned in the dishwasher or with a non-abrasive sponge and dishwashing liquid.
- Clean the body of the appliance with a damp sponge and dishwashing liquid.
- Dry the parts carefully before reassembling.
- Children should not clean or perform maintenance procedures on the appliance unless they are supervised by a responsible adult.
- Do not use the appliance close to inflammable materials (blinds, curtains, etc.), nor close to an external heat source (gas hob, hotplate, etc.).
- This appliance is intended to be used only in the household. It is not intended to be used in the following applications, and the guarantee will not apply for:
 - staff kitchen areas in shops, offices and other working environments;
 - farm houses inns,

- clients in hotels, motels and other residential type environments,
- bed and breakfast type environments.
- **Do not immerse the product in water or any other liquid.**
- For your safety, only use accessories and spare parts that are suitable for your appliance.
- For your safety, this appliance conforms with applicable standards and regulations (Directives on Low Voltage, Electromagnetic Compatibility, Materials in contact with food, Environment, etc.).
- Check that the voltage of your mains network corresponds to the voltage given on the rating plate on the appliance (alternative current).
- Since regulations can differ from place to place, if the appliance is used in a different country to where it was purchased, have it checked by an approved service centre.
- For models with detachable power cords, only use the original power cord.
- Do not use an extension lead. If you accept liability for doing so, only use an extension lead which is in good condition, has a plug with an earth connection and is suited to the power rating of the appliance.
- Use the appliance on a flat, stable, heat-resistant work surface away from water splashes.
- Do not let the power cord dangle.
- Never leave the appliance unattended whilst it is plugged in and switched on.
- Do not unplug the appliance by pulling on the power cord.
- Always unplug the appliance after use, or when moving or cleaning it.
- In the event of fire, unplug the appliance and smother the flames using a damp tea towel.
- Do not move the appliance if it contains hot food.
- Before using for the first time, we recommend you switch the appliance on for 30 minutes to eliminate the 'new' smell.
- When using the product for the first time, it may release a non-toxic odour. This will not affect use and will disappear rapidly.
- Do not overload the tray; stick to the recommended quantities.
- **To avoid damaging your appliance, please ensure that you follow recipes in the instructions and recipe book; make sure that you use the correct amount of ingredients.**
- We guarantee that the materials in contact with food comply with regulations regarding materials that come into contact with foodstuffs.

* Depending on model

Protect the environment

- Your appliance has been designed to run for many years. However, when you decide to replace it, remember to think about how you can contribute to protecting the environment.
- Before disposing of your appliance, make sure to remove the battery from the timer and dispose of it at a special collection point or approved service centre (depending on model).
- The Approved Service Centres will take back any old appliances you may have so that they can be disposed of in accordance with environmental regulations.

Environment protection first!



① Your appliance contains valuable materials which can be recovered or recycled.

➡ Leave it at a local civic waste collection point.

DESCRIPTION

- | | |
|------------------------------|------------------------|
| A. Basket | 4) Meat |
| B. Basket handle | 5) Bake |
| C. Draw | 6) Preheat |
| D. Air vent | 7) Keep warm |
| E. Digital touchscreen | G. Power cord |
| F. Automatic cooking modes : | H. Cooking mode button |
| 1) Frozen chips | I. Temperature button |
| 2) Frozen snacks | J. + or - buttons |
| 3) Chicken | K. Start button |

EN

BEFORE USING FOR THE FIRST TIME

1. Take all parts out of their packaging.
2. Remove all stickers and labels on the appliance.
3. Clean the basket and draw with hot water, washing-up liquid and a non-abrasive sponge.
Note: these parts can also go in the dishwasher.
4. Wipe the interior and exterior of the appliance with a damp cloth.

PREPARATION FOR USE

1. Place the appliance on a stable, level and flat surface. Do not place the appliance on surfaces not resistant to heat.
2. Insert the basket correctly in the draw.
3. The Fry Delight XL works using hot air, **therefore do not fill the draw with oil or any other liquid.**

Do not place anything on top of the appliance. This restricts the air flow and affects the hot air cooking results. This appliance is not designed to be in-built. Place your appliance on a stable worktop or kitchen bench that can withstand temperatures of at least 90°C.

INSTRUCTIONS USING THE APPLIANCE

Fry Delight XL allows you to prepare a wide range of ingredients. You can find recipes online at www.tefal.com.au that will help you discover what your appliance can do. The cooking times for the main ingredients are provided in the "Settings" section.

1. Plug the power cable into an electrical socket.
2. Start the preheating phase if you wish. To do this, press the Start button that begins flashing as soon as the appliance is plugged in. The temperature displayed on the first use is 60°C.
 - Adjust to the desired temperature with the + and - keys on the digital screen.
 - Press the Start button again to start preheating.
 - A bar graph will appear, showing you the progress towards your target temperature.
 - The appliance will beep when the temperature has been reached.
 - The preheating phase is now completed.
3. Open the appliance drawer and place the ingredients in the basket.

Note: do not fill the basket right up to the top, and do not exceed the quantities given in the table (see "Settings" section), as this could affect the final result.

4. Close the drawer.


Never use the draw without the basket inside.

Note: 5 consecutive beeps means the draw is not positioned correctly in the appliance.



Warning: allow the draw to cool before handling. Always hold the basket by the handle.

5. To begin cooking, you can select between the automatic cooking mode or choose the settings yourself.

b. If choosing manual settings:

- Adjust the temperature with the + and - keys on the digital screen. The thermostat varies from 60-200°C.
- Then set the desired cooking time by pressing the  button and adjusting the time with the + and - on-screen keys. The timer can be set for between 0 and 60 minutes.
- Press the Start button to begin cooking with the selected temperature and time settings. Cooking starts. The selected temperature and remaining cooking time will alternate on the on-screen display.

a. If choosing automatic cooking mode:

- Press  to display the cooking mode number.
 - Then press the + and - keys or  button on the screen to select the desired cooking mode (these modes are described in detail in the “Settings” section).
 - Confirm the cooking mode by pressing the Start button. This will launch the cooking process.
 - Cooking starts. The selected temperature and remaining cooking time will alternate on the on-screen display.
6. Some ingredients need to be stirred halfway through cooking (see “Settings” section). To do this, open the appliance drawer, lift the basket by its handle and shake. Keep the basket back in place inside the draw and close the drawer. Then press the Start button again to restart cooking.


7. **Once the cooking time has elapsed, the appliance will make a sound and switch off. Remove the basket from the appliance and place it on a heat resistant surface.**

8. Empty the basket into a bowl or plate.

Tip: to remove bulky or fragile ingredients, use a pair of tongs.

9. The draw and ingredients will be hot at the end of cooking. Depending on the type of ingredients placed in the Fry Delight XL, steam may escape from the draw.

10. When a basket of food is cooked, you can immediately start a new cooking process in your appliance.

Note: after 15 minutes of inactivity, the appliance will switch to Sleep mode. Press the  button to turn it back on again.

SETTINGS

The table below will help you to select the basic settings for the ingredients you want to prepare.

Note: the cooking settings shown below are only indications. They may vary depending on the type, size, shape and brand of the ingredients.

EN

	Quantity (g)	Time (min)*	Temperature (°C)	Corre- sponding cooking mode	Stir halfway through cooking	Additional information
Potatoes and fries						
Thin frozen fries	1000	16	200	1	yes	Fry thickness: 8 x 8 mm
Chunky frozen chips	1000	19	200	1	yes	Chip thickness: 10 x 10 mm
Fresh chips (10 x 10 mm)	1200	26	200		yes	Add 1/2 soup spoon of oil

Meat and poultry						
Frozen burgers	400	6	180	4	yes	
Whole chicken	1200	55	160		no	Add 2 tablespoons of oil
		5	200			
Chicken drumsticks	5 pieces	30	170	3	yes	
Chicken breast	800	16	160		yes	
Fresh Salmon Fillets	3 pieces	7	160	Manual setting	no	

	Quantity (g)	Time (min)*	Temperature (°C)	Corre- sponding cooking mode	Stir halfway through cooking	Additional information
Snacks						
Samosas	8 pieces	10	200	2	no	Pre-prepared
Frozen chicken nuggets	200-400	8	200	2	yes	
Fresh salmon fillets	3 pieces	20	200		no	
Frozen croquettes	6 pieces	16	200		yes	

Desserts						
Chocolate cake	600	25	160	5		Use a baking tin

* it is recommended to add an extra 3 minutes of preheating time to the cooking times given. To do so, you can use cooking mode no.6 that will allow a fast preheating of the appliance. Cooking mode no.7 will keep the ingredients for 30 minutes afterwards.

Find recipes online at www.tefal.com.au

MAKING HOMEMADE CHIPS

For the best results, we recommend you use precooked chips (e.g. frozen). If you would like to cook homemade chips, follow the steps below.

1. Use a variety of potato recommended for making chips.
2. Peel the potatoes and cut them into sticks approximately 1 cm thick.
3. Rinse the sticks in water and dry them with kitchen towel.
4. Pour 1/2 soup spoon of oil into a bowl, place the potato sticks on top and mix until they are all covered in oil.
5. Place the sticks in the basket.
Note: to prevent excess oil from accumulating in the bottom of the draw, we advise you to NOT just tip the entire bowl of potato sticks in the basket.
6. Cook the chips as described in the “**Settings**” section.

ADVICE

- Smaller ingredients generally require a slightly shorter cooking time than larger ingredients.
- Adjust the cooking time depending on the volume of ingredients: more food will require a slightly longer cooking time, and smaller quantities will require slightly less.
- Stir small ingredients halfway through cooking for best results and to ensure everything is cooked evenly.
- Do not cook very fatty foods, such as sausages, in your Fry Delight XL.
- Nibbles that can be cooked in an oven can also be cooked in the Fry Delight XL.
- You can also use your Fry Delight XL to heat up food. To reheat food, set the temperature to 160°C and the timer to 5-10 minutes.

EN

CLEANING

Clean the appliance after each use.

The coating on the draw and basket is non-stick. Do not use metal utensils or abrasive cleaning materials, as they may damage the nonstick coating.

1. Unplug the appliance from the wall socket and leave to cool.

Note: remove the draw for a speedier cool-down.

2. Wipe the outside of the appliance with a damp cloth.
3. Clean the basket and draw with hot water, washing-up liquid and a non-abrasive sponge. You can use a degreasing liquid to remove any dirt residue.

Note: the draw and basket are dishwasher-safe.

Tip: for stubborn stains on the basket or bottom of the draw, fill the draw with warm soapy water. Place the basket in the draw and leave them both to soak for around 10 minutes.

4. Wipe the inside of the appliance with the hot water and a non-abrasive sponge. Never immerse the body of the appliance in water.
5. Clean the heating element with a brush to remove any food residue.

Table of error codes*: Er.

Er. 1 or Er. 2	There is a problem with the ventilation of your appliance.	Check that all removable parts are present and in their correct position. Check there are no foreign objects in any of these removable parts. Check there are no foreign objects in the ventilation duct - if there are not and the fault persists, take your appliance to an approved service centre.
Er. 2 or Er. 3	This error can occur if the appliance is stored for long periods of time at a very low temperature.	Leave the appliance at room temperature of more than 15°C for one hour before attempting to restart. If the problem persists, take the appliance to an approved service centre.
Er. 4	There is a problem with the temperature sensor.	Take the appliance to an approved service centre.

Er. 5	The mains voltage in your home is too low and cooking performance may be affected.	Contact your electricity supplier.
Er. 6	The mains voltage in your home is too high, which has triggered the appliance's safety features to prevent overheating.	Contact your electricity supplier.

* Depending on the model.

STORAGE

1. The appliance must be disconnected and completely cool.
2. Make sure that all parts are clean and dry.

WARRANTY AND AFTER-SALES SERVICE

If you need to contact after-sales for information or in the event of a problem, go to the Tefal website at www.tefal.com.au or contact the customer services department for your country. You will find the phone number in the worldwide warranty booklet. If there is no customer service department in your country, please go to your local Tefal distributor.

DIAGNOSIS OF FAULTS

If you encounter problems with your appliance, please visit www.tefal.com.au to consult the Frequently Asked Questions or contact the customer service department in your country.

ENVIRONMENT

Do not throw the appliance out with the normal household waste if it no longer works. Instead take it to a collection point for it to be recycled. You will help to preserve the environment that way.

This product is repairable by TEFAL/T-FAL*, during and after the guarantee period.

Accessories, consumables and end-user replaceable parts can be purchased, if locally available, as described on the TEFAL/T-FAL internet site www.tefal.com

The Guarantee** : TEFAL/T-FAL guarantees this product against any manufacturing defect in materials or workmanship during the guarantee period within those countries*** as stated in the attached country list, starting from the initial date of purchase or delivery date. The international manufacturer's guarantee covers all costs related to restoring the proven defective product so that it conforms to its original specifications, through the repair or replacement of any defective part and the necessary labour. At TEFAL/T-FAL's choice, a replacement product may be provided instead of repairing a defective product. TEFAL/T-FAL's sole obligation and your exclusive resolution under this guarantee are limited to such repair or replacement.

Conditions & Exclusions : TEFAL/T-FAL shall not be obliged to repair or replace any product which is not accompanied by a valid proof of purchase. The product can be taken directly in person or must be adequately packaged and returned, by recorded delivery (or equivalent method of postage), to a TEFAL/T-FAL authorised service centre. Full address details for each country's authorised service centres are listed on TEFAL/T-FAL website (www.tefal.com) or by calling the appropriate consumer Service centre set out in the attached country list. In order to offer the best possible after-sales service and constantly improve customer satisfaction, TEFAL/T-FAL may send a satisfaction survey to all customers who have had their product repaired or exchanged in a TEFAL/T-FAL authorised service centre.

This guarantee applies only for products purchased and used for domestic purposes and will not cover any damage which occurs as a result of misuse, negligence, failure to follow TEFAL/T-FAL instructions, or a modification or unauthorised repair of the product, faulty packaging by the owner or mishandling by any carrier. It also does not cover normal wear and tear, maintenance or replacement of consumable parts, or the following:

- using the wrong type of water or consumable
- damage as a result of lightning or power surges
- accidents including fire, flood, etc
- damage to any glass or porcelain ware in the product
- or poor results specifically due to wrong voltage or frequency as stamped on the product ID or specification
- mechanical damages, overloading
- ingress of water, dust or insects into the product (excluding appliances with features specifically designed for insects)
- scaling (any de-scaling must be carried out according to the instructions for use)
- professional or commercial use

Consumer Statutory Rights : This international TEFAL/T-FAL guarantee does not affect the Statutory Rights a consumer may have or those rights that cannot be excluded or limited, nor rights against the retailer from which the consumer purchased the product. This guarantee gives a consumer specific legal rights, and the consumer may also have other legal rights which vary from State to State or Country to Country. The consumer may assert any such rights at his sole discretion.

***Where a product purchased in a listed country and then used in another listed country, the international TEFAL/T-FAL guarantee duration is the one in the country of usage, even if the product was purchased in a listed country with different guarantee duration. The repair process may require a longer time if the product is not locally sold by TEFAL/T-FAL. If the product is not repairable in the new country, the international TEFAL/T-FAL guarantee is limited to a replacement by a similar or alternative product at similar cost, where possible.

*TEFAL household appliances appear under the T-FAL brand in some territories like America and Japan. TEFAL/T-FAL are registered trademarks of Groupe SEB.

Please keep this document for your reference should you wish to make a claim under the guarantee.

****For Australia only:**

Our goods come with guarantees that cannot be excluded under the Australian Consumer Law. You are entitled to a replacement or refund for a major failure and compensation for any other reasonably foreseeable loss or damage. You are also entitled to have the goods repaired or replaced if the goods fail to be of acceptable quality and the failure does not amount to a major failure.

****For India only:** The guarantee length depends on the product and the State in India. Full guarantee terms must be checked at the point of sale. Products purchased outside and used in India benefit from a 2 year guarantee.

The guarantee covers exclusively the repair of a defective product, but at TEFAL's choice, a replacement product may be provided instead of repairing a defective product. It is mandatory that the consumer, to have his product repaired, has to log a service request on the dedicated Smartphone application TEFAL SERVICE APP or by calling TEFAL Consumer Care Center at **1860-200-1232, Opening hours Mon-Sat 09 AM to 06 PM**. Products returned by Post will not be covered by the guarantee. As a proof of purchase consumer needs to provide both this stamped guarantee card and cash memo.

Tefal® T-fal®

INTERNATIONAL GUARANTEE

www.tefal.com

Date of purchase

.....

Retailer name and address

.....

Product reference

.....





Distributor stamp

.....

TEFAL/T-FAL INTERNATIONAL GUARANTEE: COUNTRY LIST

SMALL HOUSEHOLD APPLIANCES

www.tefal.com

			
AUSTRALIA	1300307824	1 year	Groupe SEB Australia PO Box 404 North Ryde, NSW, 1670
NEW ZEALAND	0800 700 711	1 year	GROUPE SEB NEW ZEALAND PO Box 17 – 298, Greenlane, 1546 Auckland New Zealand

